

Thread Painting & Sketching Whimsical Flowers

3 or 6 Hour Workshop

Nancy Prince

Workshop Description: This is a perfect class for beginners or for those wanting to brush up on their thread work skills. This workshop introduces you to the technique for both thread painting and thread sketching making it easy for you to incorporate these techniques into your own quilt or landscape design. A preprinted design acts as a guide to make the technique simple. Creating designs in thread is just too much fun so come learn the process.

Thread Painting Thread – 40 weight rayon or polyester **OR** 50 weight cotton

6 hour workshop

- Large flower – black, dark gray, medium gray, bright fluorescent pink, bright gold, medium olive - ***NOTE: the bright pink needs to be bright to show up on the lime green fabric***
- Small flower – bright royal blue, dark blue, dark or medium brown
- Stems and leaves - black
- Bring additional rayon or polyester threads in pink, blue, yellow and gray
- Gray or white 60 weight bobbin thread – like Superior Bottom Line – (available for sale in workshop)

3 hour workshop – ***Omit the thread for the Small Flower. The remainder of the thread stays the same as the 6 hour workshop.***

Notions

- 6" wooden or plastic machine embroidery hoop (***available for sale in workshop***)
- Basic sewing supplies – scissors, 80/12 or 91/14 machine needles, tweezers, etc
- Fabric (1) 10" x 14" piece of lime green tone-on-tone cotton (please no large designs or busy prints)
- Fabric – 10"x10" piece if muslin (if you want to practice first)
- Sewing machine
 - ***Please know how your machine works and make sure it is in good working order before class. For thread painting you will need to know how to drop the feed dogs, how to adjust your machine for free-motion machine embroidery, how to change the upper tension and know where to change the width on the zigzag stitch. If you are unsure of these machine adjustments, please check with your machine dealer before class. A solid sewing platform is recommended. You will need a zigzag throat plate. Thanks for checking this out before class.***
- **Open** toe free motion foot such as #24 for Bernina or a stippling open toe foot for Viking. It is important to see what you are stitching and where the next stitches are going so select the best foot you can for visibility. Visibility on machines with a clear oval plastic foot is practically zero. Cutting away between the two red lines on this type foot works on most machines. Check with your machine dealer for optional free motion feet.
- Black permanent ultra fine point marker
- Embroidery or extra bobbin case (only if you have one)
- Magnifier – only if you have one and you have difficulty seeing

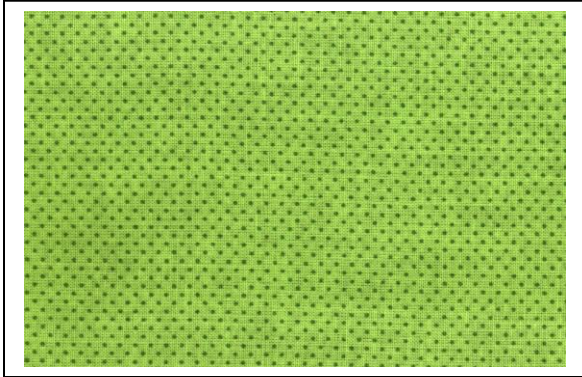
Workshop Kit Fee: **\$14.00**

Kit includes: (1) preprinted design
Pattern on CD

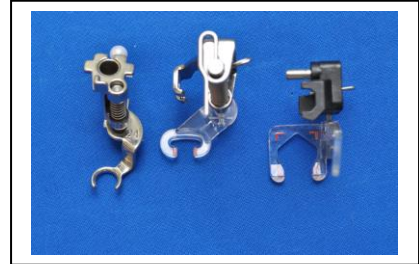
2 pieces stabilizer backing

**Items available the day of class*:
For Sale in Workshop**

- \$10.50 - 6" Wooden machine embroidery hoop



Example of type of fabric for background –
no busy prints or large designs



Examples of free motion feet
from left:

1. Bernina #24
2. Janome or Baby Lock
or Viking
3. Pfaff



Completed quilt

To view my free video
demonstrating the difference
between a straight and zigzag
stitch go to

www.nancyprince.com and
at the Home page, scroll
down to *Stitches with
Attitude*.

*NOTE: The project for the
workshop can be seen on my
website,
www.nancyprince.com,
under the Workshop section
*Whimsical Flowers**